



# CHATEAU YERING

*Yarra Valley*



ACCOMMODATION FINE DINING CONFERENCING TEAM BUILDING RETREATS







## Facilities

**3 Conference rooms**

**32 Accommodation suites**

**2 Guest lounges**

**Cocktail bar**

**2 Restaurants**

**Private dining rooms**

**24 Hour room service**

**250 Acre estate**

**Tennis court**

**Garden swimming pool**

**Adjoining winery**

**Onsite activities**

**Outdoor events**

**Onsite Helipad**

**Beauty Treatments**

**Onsite car parking**

**C**hateau Yering Hotel, a Victorian mansion set on 250 acres, in the Yarra Valley, Victoria's premier wine region. The hotel offers 32 individually furnished five star suites and beautiful guest lounges.

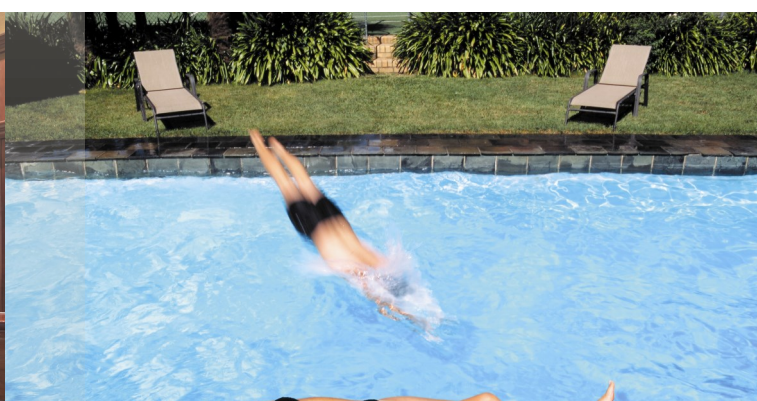
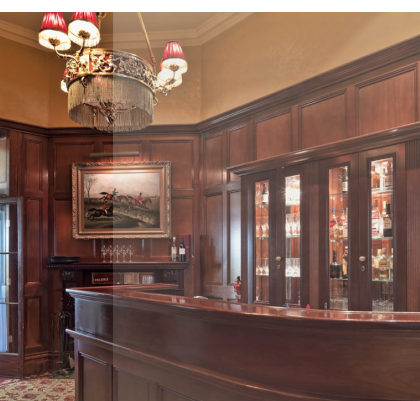
From an elegant boardroom with a mahogany table for 14 to The Oak Room that can accommodate 150, Chateau Yering Hotel has the facilities you need. The superbly furnished conference rooms have an atmosphere of classic elegance, complimented by 21<sup>st</sup> century technology.

Whatever equipment you need, from whiteboards and flipcharts to podiums and audio visual, we can provide it. In addition, every suite has complimentary broadband internet and wireless internet in the conference rooms. So you'll be out of town, but never out of touch.

The lounges, which showcase fine paintings and antique furniture, are ideal for tea breaks and post conference drinks and the beautiful gardens are also at your disposal.

From the tennis court and swimming pool on the property, to the nearby Jack Nicklaus designed golf course, recreational opportunities abound. Wine tasting and tours at the various vineyards are a fantastic way to experience the Yarra Valley.

With the world-famous Healesville Wildlife Sanctuary just 15 minutes away and the river and the hills at our doorstep, there's always something delightful to do, see and taste.







## Meeting Rooms

### The Oak Room

The Oak Room offers magnificent views across the Yarra Valley and its vineyards into the distant Great Dividing Range. The room has been created to make your conference a success. Choose from a banquet, classroom, cabaret, horse shoe set up etc. The Oak Room offers its own bar, bathroom and lobby – perfect for morning and afternoon teas. This space is ideal for medium to large meetings from 10 – 150 delegates.

### The Library

A deluxe sitting room with open fireplace and antique furniture. Ideal for a relaxed Conference, private dining room, small board meeting or breakout room.



### The Chinese Room

An elegant boardroom with a mahogany table, it is ideal for small meetings of up to 12 delegates. The Chinese Room has a floor to ceiling window that looks out onto the Heritage listed gardens, seats are high backed and cushioned and the room has its own entrance to the Sweetwater Café.

Room	Sq (m)	Theatre	Classroom	U-shape	Boardroom	Cabaret	Banquet	Cocktail
The Oak Room	165	150	100	40	50	100	130	150
The Library	36	20	12	16	14	-	20	20
The Chinese Room	22.5	-	-	-	14	-	14	-
Sweetwater	165	60	40	-	25	-	80	100
Eleonore's	156	120	60	40	40	-	100	120





#### Melba Suites (22 suites)

From your own balcony or verandah enjoy sweeping views across the gardens or to the Yarra River and the distant mountains. Or just settle into the comfort of your suite with a lounge and dining area, king size bed, TV, DVD and marble bathroom with a deep claw-foot bath.

Available single, double or twin share

## Accommodation

*32 individually decorated, luxury suites*

#### Stable Suites (3 suites)

Located in the original stables, these beautifully restored suites offer an antique four-poster bed, open fireplace, luxurious spa and a private verandah.

Available single or double share



#### Yarra Suites (6 suites)

Comprising a luxurious king-size bedroom, separate lounge and dining area, marble bathroom with spa and an over-sized balcony or verandah that offers panoramic views of the Yarra Valley.

Available single, double or twin share



#### Yering Suite (1 suite)

A private staircase leads you to this suite in the original house. The bedroom showcases an antique half-tester bed, separate lounge and dining room, two private balconies and a large marble bathroom with a corner spa bath.

Available single or double share







## Packages

*Let us create a package for your next event*



### Overnight Accommodation

*From \$295.00 per person (Single)*

#### Package include:

- \* Overnight accommodation
- \* Fully Cooked a la cart breakfast



### Day Conferences

*From \$95.00 per delegate full day or \$75.00 per delegate half day*

#### Packages Include:

- \* Conference Room Hire
- \* Arrival tea or coffee
- \* Morning tea
- \* Buffet Lunch
- \* Afternoon tea
- \* Basic Conference Equipment (Whiteboard, flipchart, screen, data projector, WIFI)
- \* Notepads, Pens and Pencils,
- \* Mints and Iced Water



## Contact



### Chateau Yering Hotel

42 Melba Hwy, Yering,  
Yarra Valley, Vic, 3770

ph: +61 3 9237 3333

fax: +61 3 9237 3300

e: [info@chateauyering.com.au](mailto:info@chateauyering.com.au)



Melbourne Tullamarine (Intl)  
60 km approx 60 mins



S 37° 41.550' E 37° 14.522'

Contact our Conference & Event Manager to discuss your requirements:

**Lauren Riggs**

ph: 03 9237 3333

e: [functions@chateauyering.com.au](mailto:functions@chateauyering.com.au)

or: [Request a quotation](#) online.

